

Anti-CDX2 Antibody, Mouse Monoclonal, H6T

Catalog: **MA01461HuM10-H6T**

50μL

Basic Info

Host

Mouse

Conjugate

None

Concentration

1mg/mL

Physical State

Liquid

Clone No

H6T

Species Reactivity

Predict reacts with: Human/Mouse/Rat

Clonality, Isotype

/

Immunogen

A synthetic peptide of human CDX2

Purification

Immunogen affinity purified

Applications

IHC

Property

Form & Buffer :

Supplied in PBS, 50% glycerol and less than 0.02% sodium azide, PH7.4.

**Specificity /
Sensitivity :**

MA01461HuM10-H6T recognizes endogenous levels of human CDX2

Applications

The application notes include recommended starting dilutions; optimal dilutions/concentrations should be determined by the end user.

IHC: 1:100-1:1000

Usage and Storage

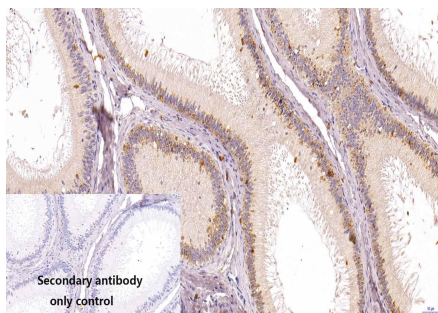
Store at 4°C for frequent use.

Aliquot and store at -20°C for 12 months.

Avoid repeated freezing/thawing and violent shaking.

Please centrifuge it, before using.

QC Data

**Figure1. Use in IHC****Sample:** Monkey epididymis sections**Primary Ab:** 1:100 Anti-CDX2 Antibody, Mouse Monoclonal, H6T**Second Ab:** 1:2000 Mouse specific IHC polymer detection kit HRP/DAB