

## Anti-KT3-tag Antibody, Mouse Monoclonal, D1T

Catalog: **TM02004GeM10-D1T**

50μL

### Basic Info

**Host**

Mouse

**Conjugate**

None

**Concentration**

1mg/mL

**Physical State**

Liquid

**Clone No**

D1T

**Species Reactivity**

Predict reacts with: Human/Mouse/Rat

**Clonality, Isotype**

/

**Immunogen**

A synthetic peptide of KT3 Tag

**Purification**

Immunogen affinity purified

**Applications**

WB

### Property

**Form & Buffer :**

Supplied in PBS, 50% glycerol and less than 0.02% sodium azide, PH7.4.

**Specificity /  
Sensitivity :**

TM02004GeM10-D1T recognizes endogenous levels of KT3 Tag

### Applications

The application notes include recommended starting dilutions; optimal dilutions/concentrations should be determined by the end user.

WB: 1:1000-1:20000

### Usage and Storage

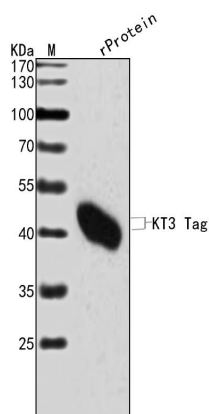
Store at 4°C for frequent use.

Aliquot and store at -20°C for 12 months.

Avoid repeated freezing/thawing and violent shaking.

Please centrifuge it, before using.

### QC Data

**Figure1. Use in WB****Sample:**

Lane 1. rProtein

**Primary Ab:**

1:1000 Anti-KT3-tag Antibody, Mouse Monoclonal, D1T

**Second Ab:**

1: 20000 HRP Goat Anti-Rabbit IgG (H+L)