

Anti-MKI67 Antibody, Rabbit Polyclonal

Synonyms: MKI67, KIA, Ki67P, Antigen Identified By Monoclonal Antibody Ki-67

Basic Info

Catalog

PA00059HuA30

Host

Rabbit

Conjugate

None

Size

100 μ L

Concentration

2.0 mg/mL

Physical State

Liquid

Species Reactivity

Human

Immunogen

A synthetic peptide of human MKI67;

UniprotKB: P46013

Purification

Immunogen affinity purified

Applications

IHC/ICC

Property

Form & Buffer: Supplied in PBS, 50% glycerol, PH7.4.

Specificity / Sensitivity: Anti-MKI67 Antibody, Rabbit Polyclonal recognizes endogenous levels of total MKI67 protein.

Usage and Storage

Shipped at 4°C.

Store at 4°C for frequent use.

Aliquot and store at -20°C for 12 months.

Avoid repeated freezing/thawing and violent shaking.

Please centrifuge it, before using.

Applications

The application notes include recommended starting dilutions; optimal dilutions/concentrations should be determined by the end user.

WB: 0.5~5 μ g/mL

IF: 5~20 μ g/mL

IHC: 5~20 μ g/mL

ICC: 5~20 μ g/mL

QC Data

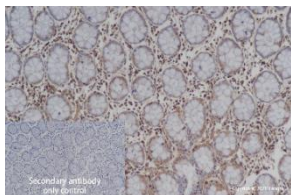


Figure 1. Application in IHC

Immunohistochemistry (Formalin/PFA-fixed paraffin-embedded sections) analysis of human colon sections labelling MKI67 with purified PA00059HuA30 at 10 μ g/mL. Heat mediated antigen retrieval was performed using citrate buffer (pH 6.0). Tissue was counterstained with Hematoxylin. Rabbit specific IHC polymer detection kit HRP/DAB secondary antibody was used at 1/4000 dilution. PBS instead of the primary antibody was used as the negative control.

For Research Use Only!