

## Anti-ACACA Antibody, Rabbit Polyclonal

Synonyms: ACAC, ACC1, ACCA, ACAC, ACC2, ACCB, ACACB, ACACA, Acetyl CoA Carboxylase, Biotin carboxylase

### Basic Info

#### Catalog

PA00270HuA10

#### Host

Rabbit

#### Conjugate

None

#### Size

100  $\mu$  L

#### Concentration

1.0 mg/mL

#### Physical State

Liquid

#### Species Reactivity

Human

#### Immunogen

Recombinant human ACACA protein, fragment Met1~Val621;

UniprotKB: Q13085

#### Purification

Antigen Affinity Chromatography

#### Applications

WB

### Property

**Form & Buffer:** Supplied in PBS, 50% glycerol, PH7.4.

**Specificity / Sensitivity:** Anti-ACACA Antibody, Rabbit Polyclonal recognizes endogenous levels of total ACACA protein.

### Usage and Storage

Shipped at 4°C.

Store at 4°C for frequent use.

Aliquot and store at -20°C for 12 months.

Avoid repeated freezing/thawing and violent shaking.

Please centrifuge it, before using.

### Applications

The application notes include recommended starting dilutions; optimal dilutions/concentrations should be determined by the end user.

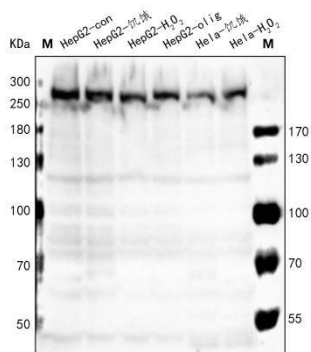
WB: 0.5~5  $\mu$  g/mL

IF: 5~20  $\mu$  g/mL

IHC: 5~20  $\mu$  g/mL

ICC: 5~20  $\mu$  g/mL

### QC Data



**Figure 1. Application in WB**

Western blot analysis of extracts of various cell lines and tissues, using ACACA antibody (PA00270HuA10) at 1  $\mu$  g/mL. Secondary antibody: HRP Goat Anti-Rabbit IgG (H+L) at 1:10000 dilution. Blocking buffer: 5% nonfat dry milk in TBST. Detection: ECL Basic Kit. Exposure time: 1.5min.

For Research Use Only!