

Anti-SMA Antibody, Recombinant Antibody

Synonyms: /

Catalog: RMAP0B9M1 Size: 100 μ L

Basic Info

Expression system

CHO

Conjugate

None

Concentration

1 mg/mL

Physical State

Liquid

Clone No

R2

Species Reactivity

Human/dog

Clonality, Isotype

mG2a、mK

Immunogen

Synthetic peptide of SMA

Purification

Protein A purified

Applications

IF

Property

Form & Buffer: Supplied in PBS, 50% glycerol, PH7.4.

Specificity / Sensitivity: RMAP0B9M1 recognizes endogenous levels of human SMA.

Usage and

Storage

Store at 4°C for frequent use.

Aliquot and store at -20°C for 12 months.

Avoid repeated freezing/thawing and violent shaking.

Please centrifuge it, before using.

Applications

The application notes include recommended starting dilutions; optimal dilutions/concentrations should be determined by the end user.

WB: 0.5~5 μ g/ml

IF: 5~20 μ g/ml

IHC: 5~20 μ g/ml

ICC: 5~20 μ g/ml

QC Data

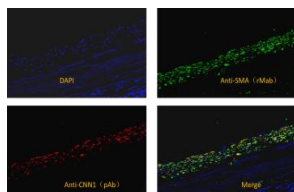


Figure 1. Application in IF

Immunocytochemistry analysis of HeLa (Human cervical cancer cell) cells labeling SMA with purified RMAP0B9M1 at 5 μ g/mL. Cells were fixed in 4% Paraformaldehyde and permeabilized with 0.1% tritonX-100. Goat anti-mouse IgG (Alexa Fluor® 488, GB25301) was used as the secondary antibody at 1/1000 (2 μ g/mL) dilution. DAPI (blue) was used as nuclear counterstain. PBS instead of the primary antibody was used as the secondary antibody only control.

For Research Use Only!